



R&S® ZS4400 Service and Maintenance Tool

For the SDR R&S® M3SR (Series 4400) radio family

- ◆ PC-based software application
- ◆ Standard LAN interface for software download and maintenance
- ◆ PIN protection
- ◆ Convenient graphical user interface
- ◆ Support of radio cloning



ROHDE & SCHWARZ

Description

The Service and Maintenance Tool R&S® ZS4400 is used for the R&S® M3SR family (Series 4400) of software defined radios.

The R&S® M3SR is a highly modular series of software-based radios that are deployed in air defense, navy and civil air traffic control missions.

Due to the software-based structure of the R&S® M3SR radio family and its components, it is possible to use the Service and Maintenance Tool R&S® ZS4400 in order to determine and log all essential features and configurations of an R&S® M3SR radio as well as of the Remote Control Unit R&S® GB4000C.

The convenient GUI of the R&S® ZS4400 gives the user the identification of the addressed radio immediately after link setup. A standard LAN connects the R&S® ZS4400 with the R&S® M3SR or within a LAN network.

The tool allows uploaded radio configurations to be downloaded to other radios. This procedure is called cloning and makes it possible to log and distribute the radio configuration, for example at selected sites or after servicing has been performed.

In addition, the R&S® ZS4400 allows software updates or applications to be downloaded to R&S® M3SR radios. A PIN is automatically queried in order to grant only authorized personnel access to the maintenance functions of the R&S® ZS4400. Entering the correct PIN authorizes the user to perform further operations.

The R&S® ZS4400 makes it possible to read out and log the activated device options.

Features

- ◆ Convenient graphical user interface: for easy operation of the service and maintenance tool
- ◆ Customized directories: for user-defined directory structure and management
- ◆ PIN entry request: to ensure authorized access only
- ◆ Radio configuration and cloning: for saving user-selected device configurations and loading this information onto other radio units to ensure identical configurations
- ◆ Error log, device inventory, radio options: device information that can be saved and printed for status freezes and system configuration

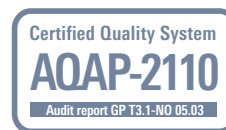
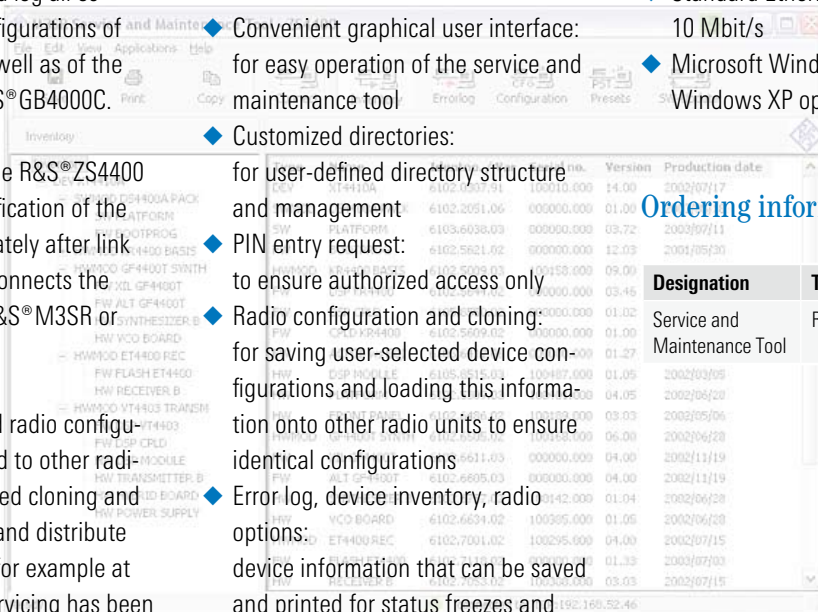
- ◆ Preset pages: download/upload of preset pages for distribution purposes
- ◆ Radio software update: automatic comparison of a software release already loaded and a CD-based one; performing software updates
- ◆ Remote access: functional within a TCP/IP network

System requirements

- ◆ Portable PC, min. 300 MHz processor, 64 Mbyte RAM, 40 Mbyte free space on hard disk drive, CD-ROM
- ◆ Standard Ethernet interface with 10 Mbit/s
- ◆ Microsoft Windows 2000 or Windows XP operating system

Ordering information

Designation	Type	Order No.
Service and Maintenance Tool	R&S® ZS4400	6105.2600.03



More information at
www.rohde-schwarz.com
 (search term: ZS4400)



ROHDE & SCHWARZ

www.rohde-schwarz.com

Europe: +49 1805 12 4242, customersupport@rohde-schwarz.com
 USA and Canada: +1-888-837-8772, customer.support@rsa.rohde-schwarz.com
 Asia: +65 65 130 488, customersupport.asia@rohde-schwarz.com